

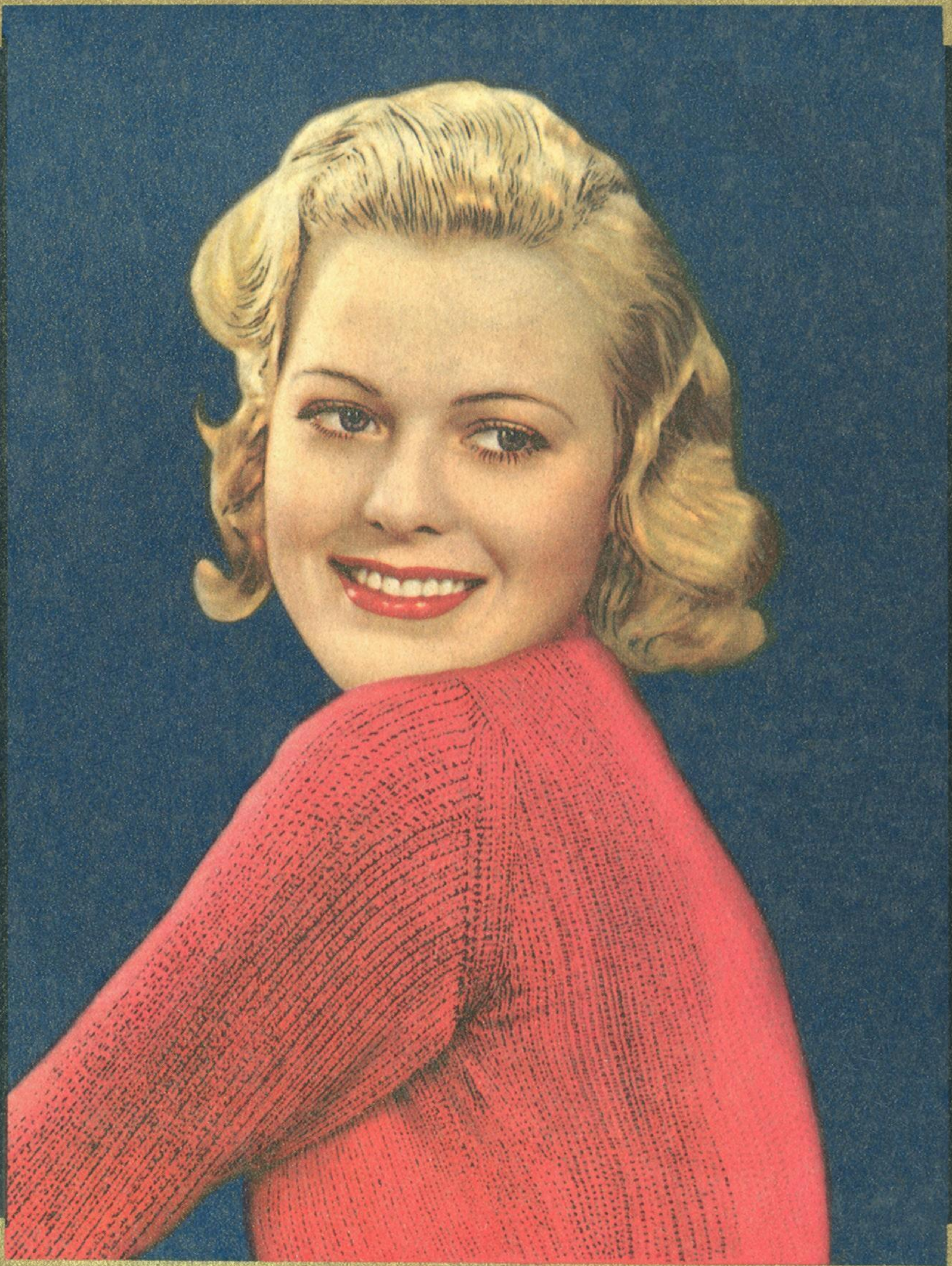


## Table of Content

Selecting the Shutter  
Famous Voigtlander Lenses  
Baby-Bessa  
Bessa  
Rangefinder Bessa  
Brilliant V6  
Superb  
Filters  
Focar Lenses  
WZ Soft Focus Lens  
Lens Hood  
Illustra and Bessapan Film

**Voigtlander**

1 9 3 9



*Wiggländer*

1 9 3 9

# A good idea

to buy a camera now! That is something it is never too soon to do. Life offers so much beauty that some of it should be retained in pictures as well as in the mind. Memories may fade, but the picture remains. To set out with a camera — for a week-end or for your holiday — is in itself an inducement to view the world with quite different eyes. There is the pleasure in finding subjects, the great fun of actual snapping, and afterwards the dozens of splendid pictures for your friends and for your album! Bright, clear pictures are what you mostly expect from your camera, and this point must be borne in mind when making your selection.

The camera with the most handsome appearance is not necessarily the most suitable model for your requirements, remember that the essential feature of a good camera is the lens. This is a point which is frequently overlooked by beginners, who attach too much importance to the size of aperture when they should aim at “quality”.

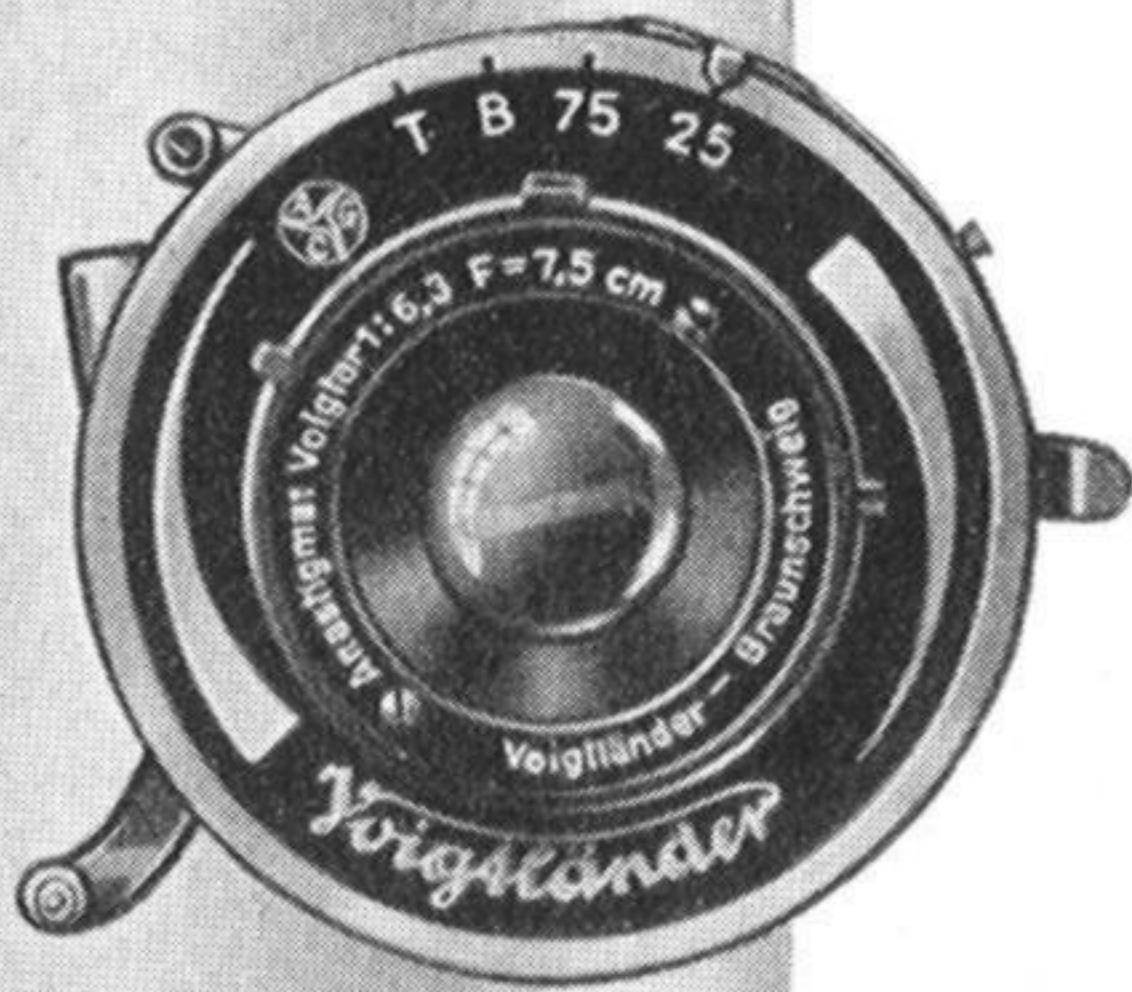
Voigtländer lenses are only available in one quality; namely, that which has made them famous and satisfied over two million amateur and professional photographers throughout the world. It is a Voigtländer principle to make every lens, no matter what its cost, with the greatest conceivable care and accuracy, and in addition to the size of aperture the difference in price is explained by the number of lens components required.

If you principally desire contact prints and only occasionally an enlargement, then a triple lens (Voigtar), which gives perfectly sharp pictures, is sufficient. If, however, you frequently want enlargements with brilliant sharpness and definition, a quadruple lens (Skopar) with its greater resolving power is always advisable. For the discriminating, and for the artistic amateur using a first-class camera, the quintuple super lens “Heliar” with its famous “plastic” modelling is principally recommended.

To enable you to decide which of the Voigtländer series is the model you require, we have set down in this book every particular which may facilitate your choice. Read it through very carefully, and your selection will be the right one.

**Voigtländer & Sohn A. G. Braunschweig**

# Selecting the Shutter



Singlo

In the first place, the shutter controls the "exposure". Depending on the speed setting the sectors open and close, and when you remember that in the Compur-Rapid they give exposures up to  $\frac{1}{500}$  sec. (one five hundredth part of a second!), it is at once apparent that such a shutter must be a precision instrument.



Prontor

What shutter is selected depends mainly on the lens. The larger the aperture, the shorter must be the exposure possible. Voigtlander have done this work for you, and made a preliminary choice. In the price tables for the cameras, the shutters most suitable for the various models are indicated, and you will merely need to choose from this selection.



Prontor II

If you occasionally wish to appear in the picture yourself, you do not need to ask someone else to take the snap for you. Most Voigtlander lenses have a built-in automatic shutter release, whenever it was possible to provide this fitting. However, supplementary self-portraiture devices can also be bought at a small cost from your photographic dealer for all other shutters, and these will give reliable results.

## Shutters

Type of shutter	Times of exposure in seconds	
Singlo	$\frac{1}{25}, \frac{1}{75}$	B, T
Prontor	$\frac{1}{25}, \frac{1}{50}, \frac{1}{100}, \frac{1}{125}$	B, T
Prontor II	$1, \frac{1}{2}, \frac{1}{5}, \frac{1}{10}, \frac{1}{25}, \frac{1}{50}, \frac{1}{100}, \frac{1}{150}, (\frac{1}{175})$	B, T
Compur	$1, \frac{1}{2}, \frac{1}{5}, \frac{1}{10}, \frac{1}{25}, \frac{1}{50}, \frac{1}{100}, \frac{1}{250}, (\frac{1}{300})$	B, T
Compur Rapid	$1, \frac{1}{2}, \frac{1}{5}, \frac{1}{10}, \frac{1}{25}, \frac{1}{50}, \frac{1}{100}, \frac{1}{200}, (\frac{1}{250}), \frac{1}{400}, (\frac{1}{500})$	B, T

The times given in brackets apply to the shutters of the Brilliant V6 camera.



Compur

Compur-Rapid

# Famous *Voigtländer* Lenses

## Voigtländer "Voigtar"

Apertures F/3.5, F/4.5, F/6.3, F/7.7

Triple lens with perfect sharp definition up to the edges of the picture. A high grade, carefully corrected anastigmat, despite the low price.



Voigtar

## Voigtländer "Helomar"

Aperture F/3.5

Also a triple lens anastigmat with brilliant definition, specially designed for the Range Finder Bessa Camera, giving sharpness up to the edges even at full aperture.



Helomar

## Voigtländer "Skopar"

Apertures F/3.5 and F/4.5

This four lens anastigmat combines the utmost sharpness with particularly great resolving powers. The Skopar is the most popular Voigtländer lens, affording remarkably high performance at a moderate price.

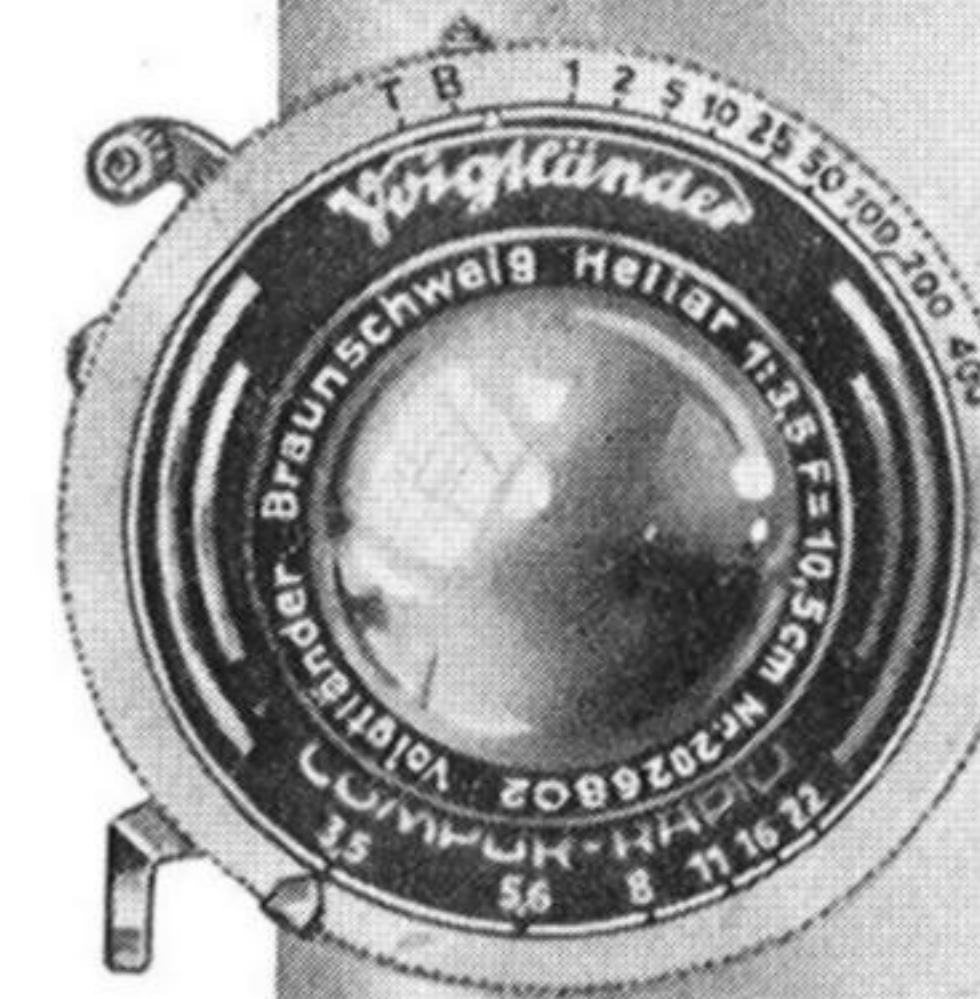


Skopar

## Voigtländer "Heliar"

Apertures F/3.5 and F/4.5

The world-famous Voigtländer "Master lens" with the wonderful "plastic" modelling. This five lens super-anastigmat is used by the most celebrated professional photographers all over the world.



Heliar



## Voigtländer BABY-BESSA

Model 66 with Framefinder for pictures  $2\frac{1}{4}'' \times 2\frac{1}{4}''$

Surprisingly small and dainty and having the appearance of a real miniature camera, the Baby Bessa gives large contact prints in the attractive  $2\frac{1}{4}''$  square size. Any standard  $3\frac{1}{4}'' \times 2\frac{1}{4}''$  films either wooden or metal cored spools can be used and since you get 12 exposures on each film, this is really inexpensive photography.

### Handy Pocket Size

Designed so that it can be carried in the pocket comfortably, this camera weighs only  $16\frac{1}{2}$  ounces, while the overall dimensions are  $5'' \times 3\frac{1}{4}'' \times 1\frac{1}{4}''$ . Metal parts are finished in dull chromium, and a folding frame finder gives the correct angle of view.

### Patent Release

Of course, this model is fitted with the famous Bessa "Trigger Release" under the baseboard, so that the camera can be held rock steady in both hands when making the exposure.

### Hinged Yellow Filter

When you open the camera the filter is in position in front of the lens ready for use. If you want another density filter this can be substituted in a moment as the mount is interchangeable, and if no filter is required it can be swung clear of the lens.

## Camera Support and Safety Lock

At the base of this model a pivoted lever acts as a camera support, and also as a safety lock so that the back cannot be opened accidentally.

## Depth of Focus

A rotary dial fixed to the top of the camera gives the depth of sharpness for any aperture, or alternatively, indicates the stop necessary to cover a certain range.

## Focussing

The camera can be set for any distance from infinity to 3 ft. and in addition to the scale in feet there is a simple snapshot adjustment.

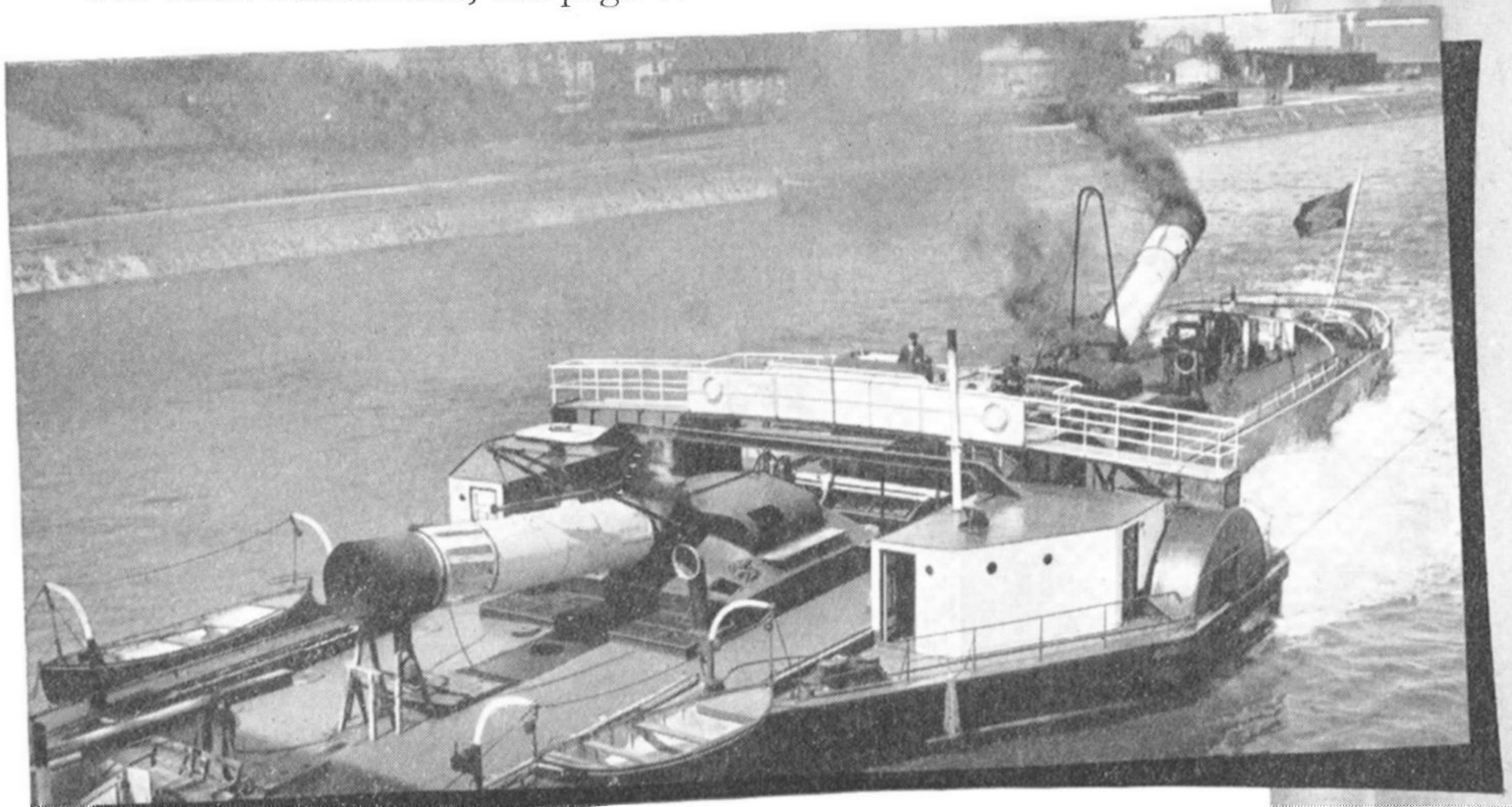
## Panchromatic Protection

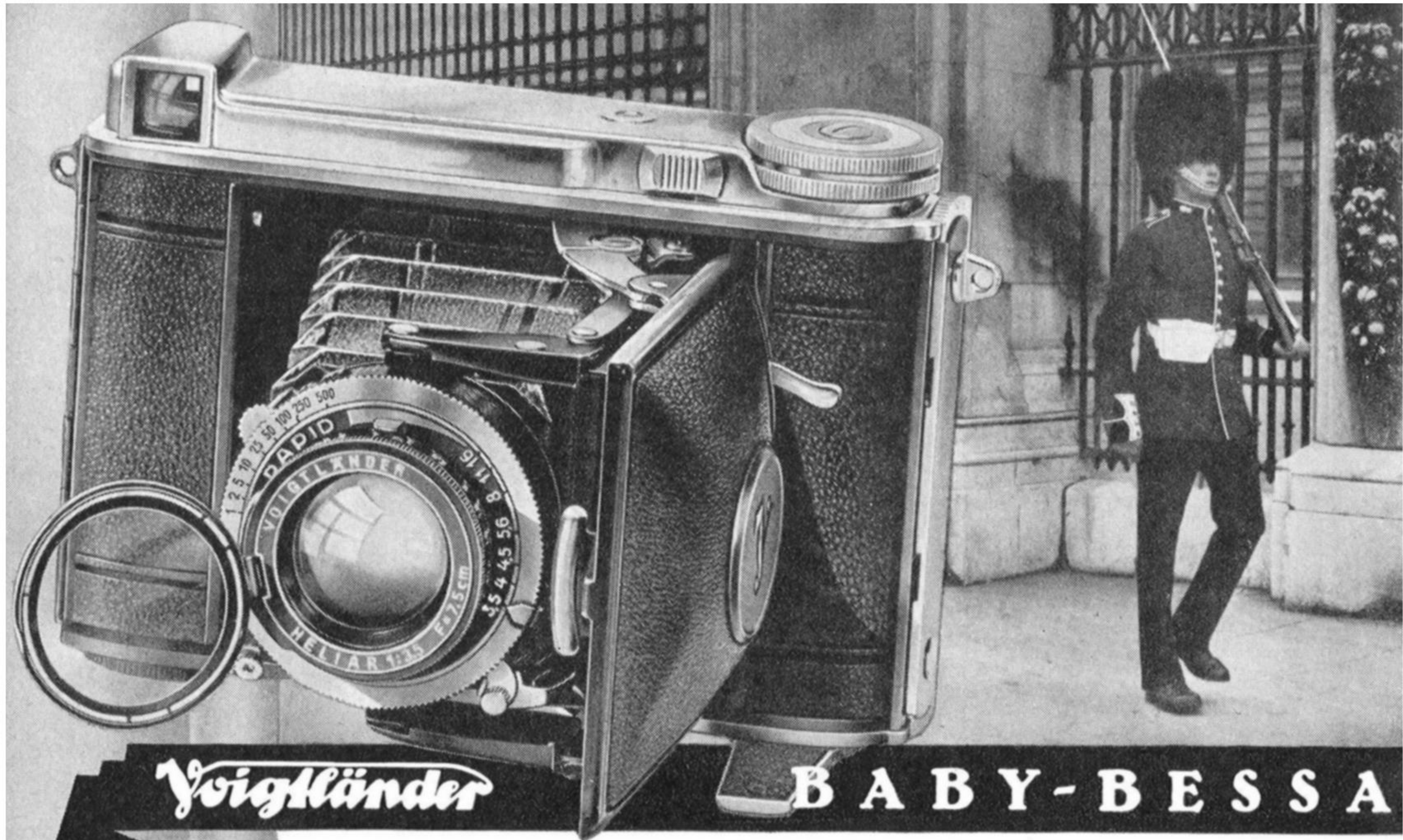
A built-in pan proof cover is fitted to the film window so that even the fastest films can be used without fear of fogging, and a pressure plate ensures that the film is held perfectly flat.

F/3.5 lens in Prontor II shutter with 8 speeds ranging from 1 sec. to 1/175th sec. and delayed action. Focal length (7.5 cm.) 3 in.

**£6 . 10 . 0**

London-made Pigskin Case.....	15/-
Ever-Ready Carrying Case .....	22/6
Soft Deerskin Wallet for Pocket use.....	6/-
For other Accessories, see page 7.	





### Models 46 and 66 with film counter

Equipped with every modern feature to ensure accurate results these cameras are "de-luxe" models of the Baby Bessa described on pages 4 and 5. They are exquisitely finished in Satin Chromium and make an immediate appeal to the eye.

### Picture Size

Both models take any standard  $3\frac{1}{4}'' \times 2\frac{1}{4}''$  film either on wooden or metal cored spools, and while Model 46 gives 16 pictures  $2\frac{1}{4}'' \times 1\frac{5}{8}''$  on the film, 12 exposures  $2\frac{1}{4}''$  square are obtained with the Model 66.

### General Construction

The body dimensions of either model are  $5\frac{1}{4}'' \times 3\frac{1}{4}'' \times 1\frac{1}{4}''$  and the weight  $17\frac{3}{4}$  ounces. Like the Baby Bessa described on the previous pages they have the following specification: Trigger release on baseboard, 2x yellow filter in hinged interchangeable mount, full panchromatic protection, depth of focus calculator, simple snapshot adjustment for lens, safety lock to back, etc.

### Other Features

In these models an optical viewfinder has been substituted for the frame type, and in addition an ingenious system of automatic film winding has been incorporated. After the film has been inserted and wound to No. 1 you can ignore the red window altogether as it is only possible to wind the film the correct distance of one picture before the mechanism locks. Also, the number of exposures taken are shown by an automatic indicator. Eyelets are provided so that the camera can be carried in an "ever-ready" position with a sling strap and Voigtländer anastigmat lenses of three, four, or five components are available.



# Voigtländer BABY-BESSA

## Model 46

Takes 16 Pictures  $2\frac{1}{4}" \times 1\frac{5}{8}"$   
on standard  $3\frac{1}{4}" \times 2\frac{1}{4}"$  film.

## Model 66

Gives 12 Pictures  $2\frac{1}{4}"$  square.  
on standard  $3\frac{1}{4}" \times 2\frac{1}{4}"$  film.

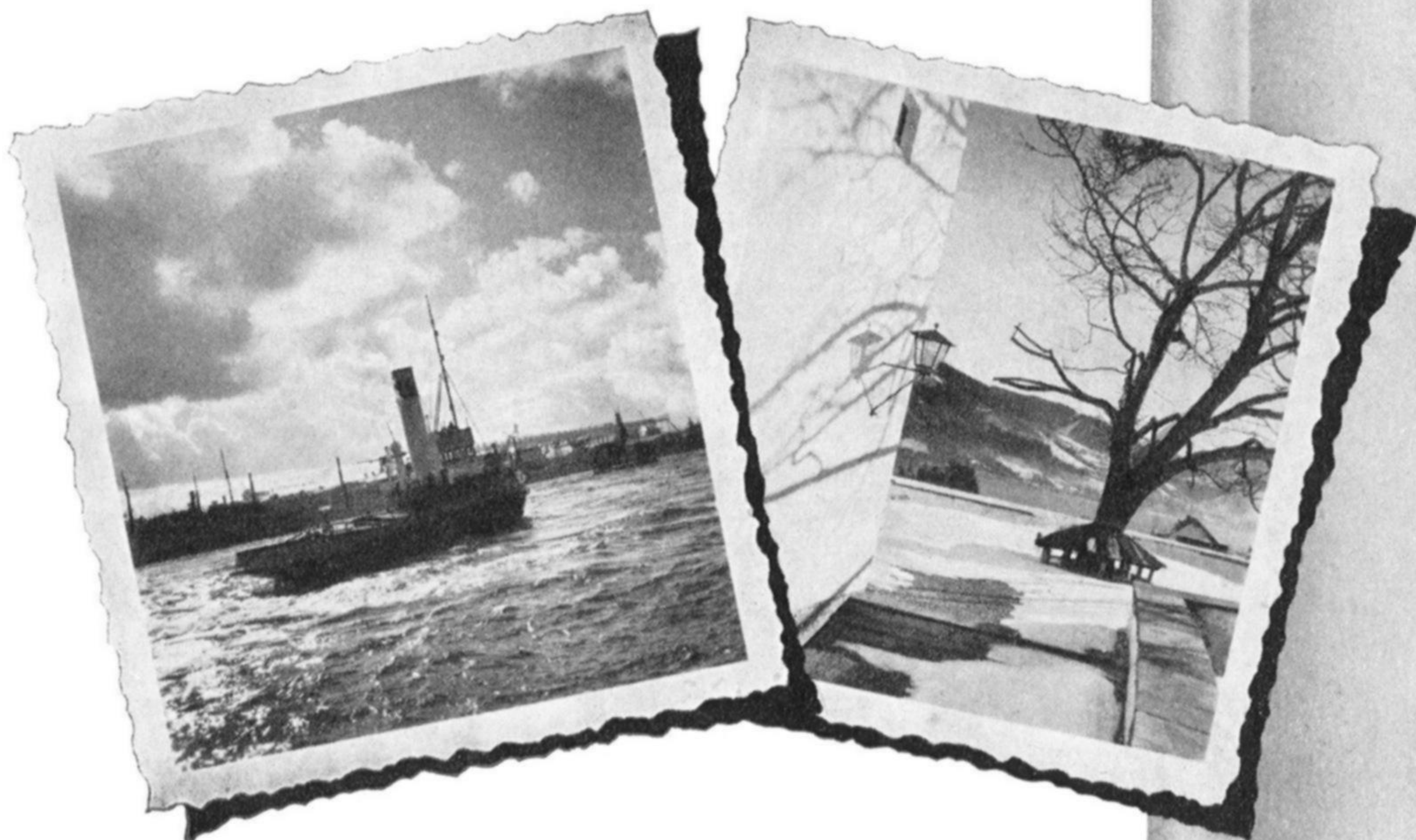
Dimensions both Models  $5" \times 3\frac{1}{4}" \times 1\frac{1}{4}"$ . Weight  $17\frac{3}{4}$  ounces.  
Prices are the same for either size Baby Bessa.

No.	Lens Anastigmat	Focal length	Shutter	Speeded to	£	s	d
1.	Voigtar F/3.5	(7.5 cm.) 3"	Compur	$\frac{1}{300}$ sec...	9	17	6
2.	Skopar F/3.5	(7.5 cm.) 3"	Compur	$\frac{1}{300}$ sec...	11	17	6
3.	Heliar F/3.5	(7.5 cm.) 3"	Compur-Rapid	$\frac{1}{500}$ sec...	14	17	6

EQUIPMENT INCLUDES: Yellow Filter (2x), Exposure Calculator, Testing Certificate and Instruction Booklet.

### USEFUL ACCESSORIES

Special Normal Yellow Filter (4x) for the hinged filter Holder with Case.....	8/-	Rubber Lens Hood, Size II with Case.....	9/-
Special Green(Panchromatic) Filter for the hinged filter Holder with Case.....	8/-	Ever-Ready Sling Strap....	2/-
Portrait Focar Lens for exposures closer than 3 ft. Size II with Holder and Case.....	10/-	Ever-Ready Carrying Case with Strap .....	22/6
Near Focar Lens for exposures closer than 20 inches. Size II with Holder and Case.....	10/-	Pigskin Carrying Case (London made) with Strap....	15/-
		Soft Deer-skin Wallet for Pocket use .....	6/-





$3\frac{1}{4}'' \times 2\frac{1}{4}''$  With half-size Mask

## Two Sizes in One

Flat, handsome and instantly ready to spring to life is the Bessa camera. It requires no complicated handling and no great knowledge of photography. Not only snaps  $3\frac{1}{4}'' \times 2\frac{1}{4}''$ , in size can be taken — but also miniatures. To insert the miniature mask is the work of a moment, and you will now have 16 pictures size  $2\frac{1}{4}'' \times 1\frac{5}{8}''$  on one film, instead of 8 pictures, size  $3\frac{1}{4}'' \times 2\frac{1}{4}''$ .

## Automatic Indication of Picture Size

When the miniature mask is inserted, the two windows in the back of the camera are open, whereas when the larger size is being used, the top window (now no longer needed) is automatically closed (this feature is patented).

## The Optical Finder

This is protected when the camera is closed by a spring lid—as in the case of a watch — and is automatically erected when the camera is opened. You can thus take your picture with lightning rapidity and lose no time opening the finder.

## “Three-Point Focussing”

You no longer need to estimate or measure the distance, but simply turn the lens mount to “portraits”, “groups”, or “landscapes”. In this way you obtain without the slightest difficulty beautiful, sharp pictures. At the apertures F/3.5 and F/4.5 you focus by the feet scale or — when the light is good — use the convenient snapshot adjustment. Simple, quick, reliable!

## Special Trigger Release

Fitted under the baseboard this patented Voigtlander feature enables you to hold the Bessa firmly in both hands, and release the shutter with one finger with remarkable steadiness and freedom from vibration.



# Voigtländer

# BESSA 3 1/4" x 2 1/4"

Lens No.	Anastigmat	Focussing System	Shutter	Speeded to	£	s	d
1.	Voigtar F/7.7	Three point focussing	Singlo.....	1/75	2	17	6
2.	Voigtar F/7.7		Singlo D.A.*.....	1/75	3	7	6
3.	Voigtar F/6.3		Prontor.....	1/125	3	15	0
4.	Voigtar F/6.3		Prontor D.A.*....	1/125	4	5	0
5.	Voigtar F/4.5	Scale in feet and snapshot focussing	Prontor II D.A.*..	1/150	6	7	6
6.	Voigtar F/4.5		Compur D.A.*....	1/250	7	7	6
7.	Voigtar F/4.5		Compur-Rapid D.A.*	1/400	8	10	0
8.	Skopar F/4.5		Compur D.A.*....	1/250	8	15	0
9.	Skopar F/4.5		Compur-Rapid D.A.*	1/400	9	17	6
10.	Voigtar F/3.5		Compur-Rapid D.A.*	1/400	9	17	6

**EQUIPMENT:**

Nos. 1—4 instruction book.

5—10 instruction book, testing certificate and exposure calculator

\* Delayed action.

**ADDITIONAL ACCESSORIES**

**YELLOW FILTERS**

Moment (Light, exposure factor about 2x).

Normal (Medium, exposure factor about 4x).

Size I for Bessa Nos. 1—3..... 9/-

Size II for Bessa No. 4..... 10/-

Size III for Bessa Nos. 5—10 11/-

Portrait Focar Lens Attachment (for distances under 3 feet):

Size I for Bessa Nos. 1—3..... 9/-

Size II for Bessa No. 4..... 10/-

Size III for Bessa Nos. 5—10 11/-

Near Focar Lens Attachment (for distances under 20 inches)

Size I for Bessa Nos. 1—3..... 9/-

Size II for Bessa No. 4..... 10/-

Size III for Bessa Nos. 5—10 11/-

**Collapsible India-Rubber**

Lens Hood in flat bakelite box:

No. I for Bessa Nos. 1—3..... 9/-

No. II for Bessa No. 4..... 9/-

Mo. III for Bessa Nos. 5—10 9/-

Finder Magnifier (abt. 4 times) for all models:

No. 5 for 3 1/4 x 2 1/4 in. size.. 5/-

No. 6 for 2 1/4 x 1 5/8 in. size.. 5/-

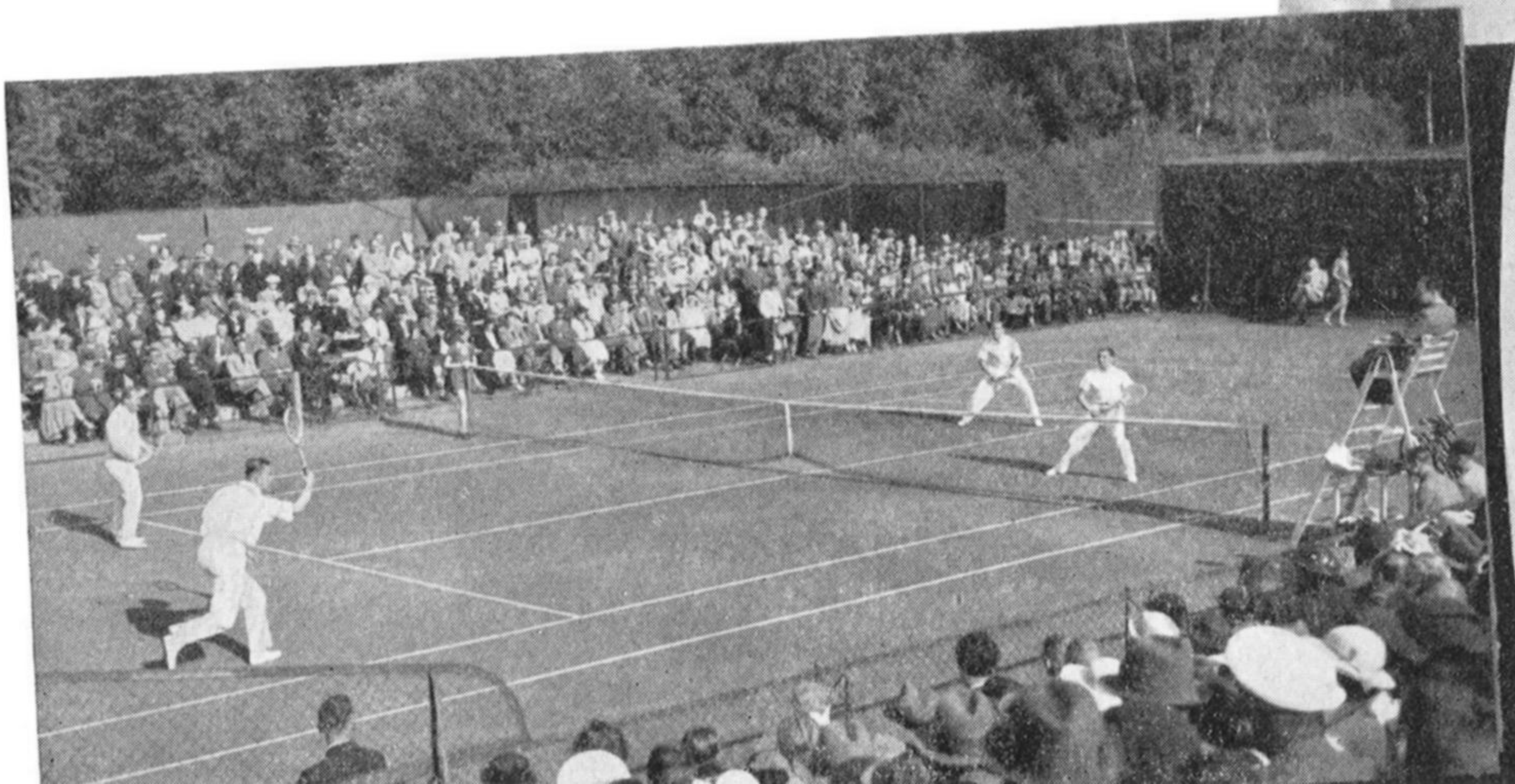
Tan leather case with shoulder sling, lock and key:

For Models 1—4..... 7/6

For Models 5—10..... 10/-

Soft deerskin wallet for pocket use 6/-

All yellow filters and focar lens attachments are supplied in a leather purse





**Voigtländer**

**Rangefinder BESSA**

Two sizes  $3\frac{1}{4}'' \times 2\frac{1}{4}''$  and  $2\frac{1}{4}'' \times 1\frac{5}{8}''$

This is the modern  $3\frac{1}{4}'' \times 2\frac{1}{4}''$  camera of perfection. Compared with the Bessa it is still quicker, still more reliable, still more handsome! You need merely examine and handle it to realise its many advantages.

### **The Distance Meter**

Rangefinding and focussing are one and the same thing in the Rangefinder Bessa, since the rangefinder is coupled to the lens. In a fraction of a second the two partial pictures in the rangefinder are merged into one—and at the same moment the camera is focussed to utmost sharpness. If at any time you want to make a snapshot unobserved, you can even focus with the camera closed, and snap the unsuspecting victim quite unexpectedly.

### **Filter ready to hand**

The filter is in place in front of the lens the moment the camera is opened. If you do not need it, it folds out of the way. Various shades of filters can also be substituted without difficulty, the hinged mount being of the interchangeable type.

### **Depth of sharpness**

This can be conveniently read from the depth of focus dial mounted on the large rotary knob, irrespectively of the range and aperture.

## Plus all the advantages of the Bessa

. . . namely, rapid shutter release on the baseboard (patented) two-size picture device, flat and attractive shape, rapidly ready for use.

The Rangefinder Bessa does cost considerably more than the Bessa, it is true, but if you can afford it—it's a splendid feeling to own such a camera.

Sport, theatre, night shots — every difficult subject is at your command with the Rangefinder Bessa, not to mention everyday shots. All the technical refinements of the camera — rangefinder, yellow filter, optical finder, base-board release, and so on — are accommodated in a splendidly sleek and handsome case.

## Voigtländer Rangefinder Bessa

With half-size Mask

Lens No.	Anastigmat	Focal length	Shutter	Shutter speed	£	s	d
1.	Helomar F/3.5	(10.5cm.) 4 $\frac{1}{8}$ "	Compur-Rapid D.A.*	$\frac{1}{400}$	18	7	6
2.	Skopar F/3.5	(10.5cm.) 4 $\frac{1}{8}$ "	Compur-Rapid D.A.*	$\frac{1}{400}$	20	17	6
3.	Heliar F/3.5	(10.5cm.) 4 $\frac{1}{8}$ "	Compur-Rapid D.A.*	$\frac{1}{400}$	23	7	6

EQUIPMENT: Instruction book, Yellow filter "Moment", Testing Certificate and Exposure calculator.

\*D.A. = delayed action device.

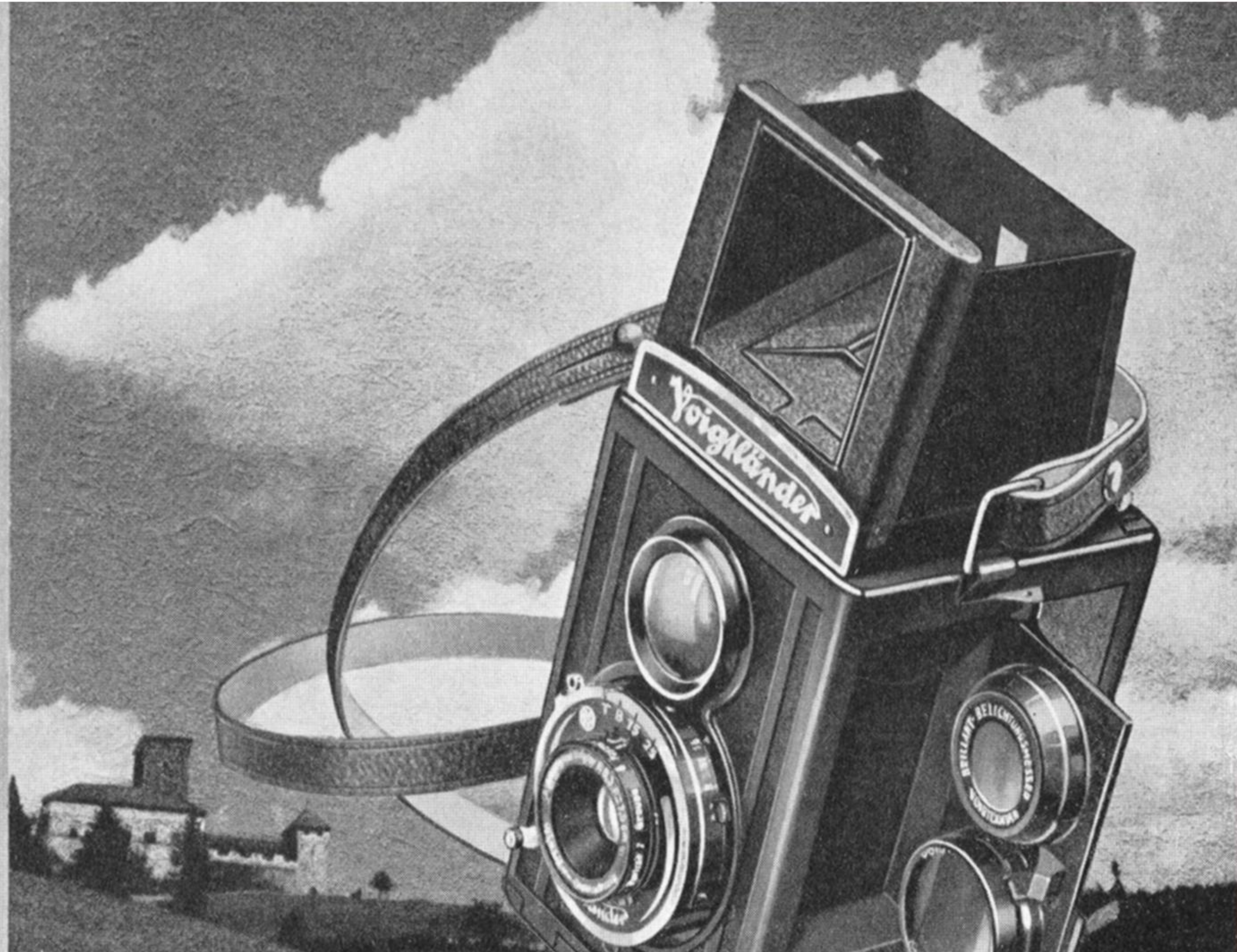
### ADDITIONAL ACCESSORIES:

Special Filter in metal ring and leather purse:

	£	s	d
Yellow filter "Moment" (exp. factor 2x) . . . . .	9	0	
Yellow filter "Normal" (exp. factor 4x) . . . . .	9	0	
Yellow-green filter for panchromatic films . . . . .	9	0	
Ever-ready case, velvet lined, with tripod screw and shoulder strap . . . . .	1	5	0
Leather carrying-case velvet lined . . . . .	12	6	
Soft Persian leather wallet . . . . .	7	6	
Focar-lens attachments and Collapsible India-Rubber lens hoods, Size III, see page 9 as for Bessa Nos. 5-10.			



**The Camera for the Connoisseur**



## Voigtländer BRILLIANT V6

Picture size  $2\frac{1}{4}'' \times 2\frac{1}{4}''$

In case you have never yet had a Brilliant in your hands, we hasten to assure you that no other camera in the world has such a large, bright and clear finder picture. This is the reason why so many beginners get splendid pictorial effects even in their first Brilliant shots.

In the erected finder hood you see your subject large and bright, just as it will appear on the film. It is almost as if you had the finished print from the photographic dealer before your eyes, and a frame sports finder is also provided for fast action pictures.

Focussing is carried out by the simple "Three Point" system similar to the Bessa model described on page 8.

The body is made from a special plastic material which is almost unbreakable, and a built-in hold-all is provided to carry filters, focar lens, or exposure meter.

When the film has been turned on exactly the length of one picture the winding knob stops automatically and prevents partial overlapping of the exposures. To enable you always to know how many snaps you have left, the Brilliant itself counts for you the number of shots you have taken.

# Voigtländer Brilliant V6 $2\frac{1}{4}'' \times 2\frac{1}{4}''$

Lens No. Anastigmat	Focal length	Shutter (showing highest speed)	£	s	d
1. Voigtar F/7.7	(7.5 cm.) 3"	Singlo $\frac{1}{75}$ sec. D.A.* . . . . .	2	15	0
2. Voigtar F/6.3	(7.5 cm.) 3"	Singlo $\frac{1}{75}$ sec. D.A.* . . . . .	3	10	0
3. Voigtar F/4.5	(7.5 cm.) 3"	Prontor II $\frac{1}{175}$ sec. D.A.* . . . . .	5	0	0
4. Skopar F/4.5	(7.5 cm.) 3"	Compur $\frac{1}{300}$ sec. . . . .	6	10	0
5. Skopar F/4.5	(7.5 cm.) 3"	Compur-Rapid $\frac{1}{500}$ sec. . . . .	7	12	6
6. Voigtar F/3.5	(7.5 cm.) 3"	Compur-Rapid $\frac{1}{500}$ sec. . . . .	8	2	6

EQUIPMENT: Brilliant No. 1: Shoulder strap, instruction-book. Brilliant No. 2: Shoulder strap, instruction-book and cable release. Brilliant No. 3 to 6: Shoulder strap, exposure calculator, instruction-book, testing certificate and cable release.

## ADDITIONAL ACCESSORIES

Yellow filters, Size 1:

"Moment" (exp. factor abt. 2x) . . . . . 9/-

"Normal" (exp. factor abt. 4x) . . . . . 9/-  
(with leather purse, suitable for all models.)

"Portrait Focar" lens attachment (for distances under 3ft.) suitable for all models, Size 1 with leather purse . . . . . 9/-

"Near Focar" lens attachment (for distances under 20") suitable for all models, Size 1, with leather purse . . . . . 9/-

Brilliant Exposure Meter\*\*

Suitable for all models, without leather purse . . . . . £1

Collapsible India-Rubber

Lens Hood:

In flat bakelite box, Size 1, suitable for all models . . . . . 9/-

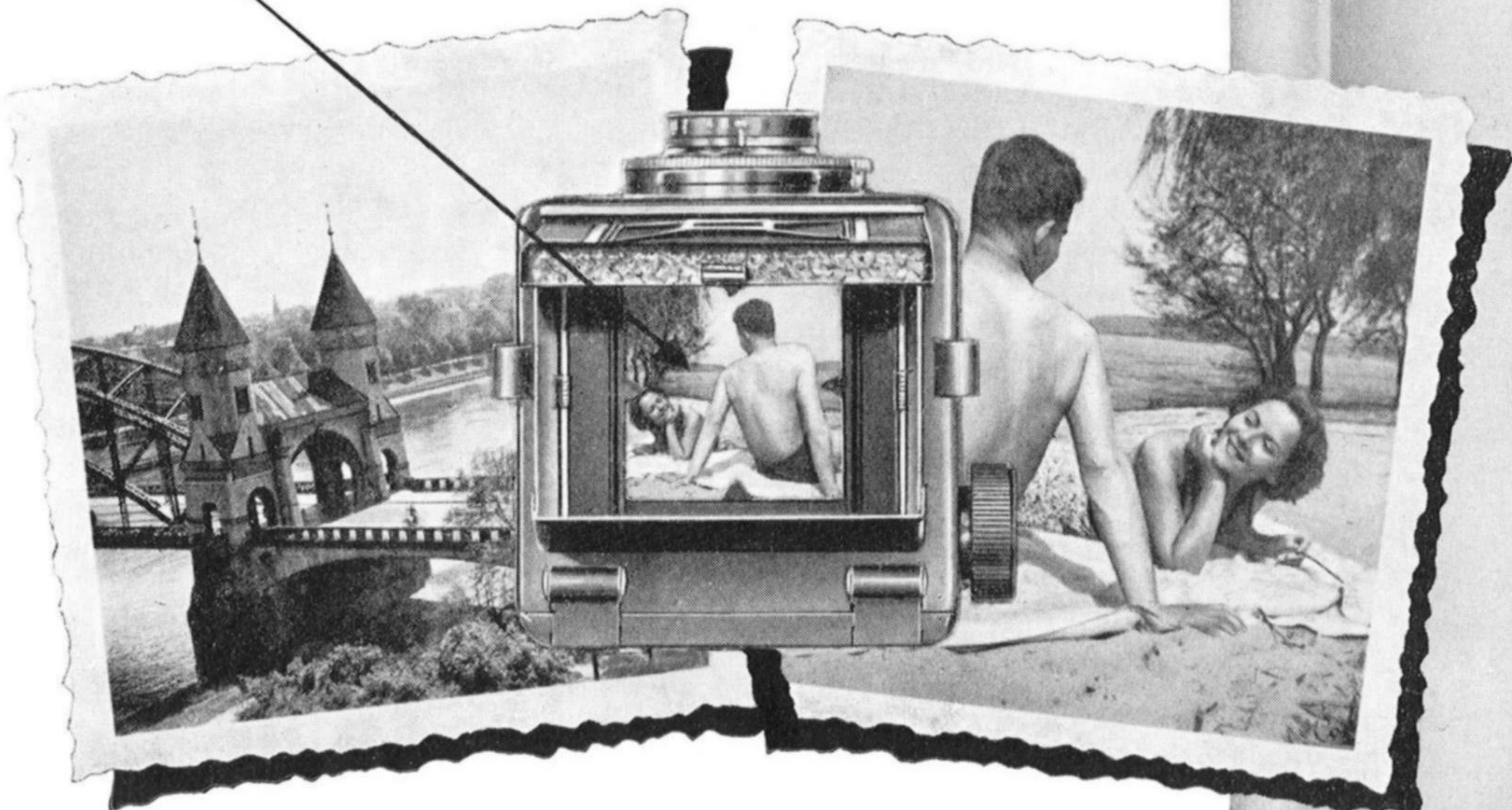
Ever-ready leather case . . . . . 12/6

Solid leather case (ordinary shape) . . . . . 12/6

\*D.A. = delayed action device.

\*\* Can be easily kept in the hold-all of the camera.

Brilliant finder picture





## Voigtländer Brilliant

V6

### Focussing Model

Picture Size  $2\frac{1}{4}'' \times 2\frac{1}{4}''$

This latest model of the famous Brilliant camera combines the advantage of a large bright finder picture with critical focussing on a ground glass screen. Like the standard series it takes 12 pictures  $2\frac{1}{4}''$  square on any  $3\frac{1}{4}'' \times 2\frac{1}{4}''$  size film, either wooden or metal cored spools.

### Focussing in the Finder Hood

The viewing lens has an aperture of F/2.2 and gives a brilliant image in the viewfinder of larger area than in the models described on page 12. Focussing is carried out on a small matt disc in the centre of the picture. Unlike the usual type of gradual focus obtained on a ground glass screen, as the milled ring of the finder lens is rotated the image springs to sudden sharpness when the correct focus is obtained, and it becomes unclear again just as quickly if turned too far. A hinged magnifier lens fixed to the finder hood ensures absolute accuracy, and this magnifier is tinted yellow to prevent dazzle from the bright image.

### Picture Composition

It is not necessary to re-focus the camera each time when viewing the subject from various angles to select the best viewpoint. When the desired pictorial effect has been composed in the large brilliant finder lens it is then a quick and simple matter to obtain a critical focus on the matt disc. A Depth of Sharpness scale is engraved on the mount of the Finder lens.



## Direct Vision Finder

An eyelevel sports finder of optical type is built into the finder hood for fast action pictures, and a sling strap is provided so that the camera can be carried in an "ever-ready" position.

## Automatic Film Winding

Like the cheaper model Brilliants, you cannot overwind the film as an automatic brake comes into operation when the film has been transported the correct distance, and an indicator shows you the number of exposures made.

### ACCESSORIES

The price includes a 2x yellow filter and the Brilliant Exposure Meter. These are carried in the built-in hold-all—therefore they are always ready to hand.

## Voigtländer Focussing Brilliant

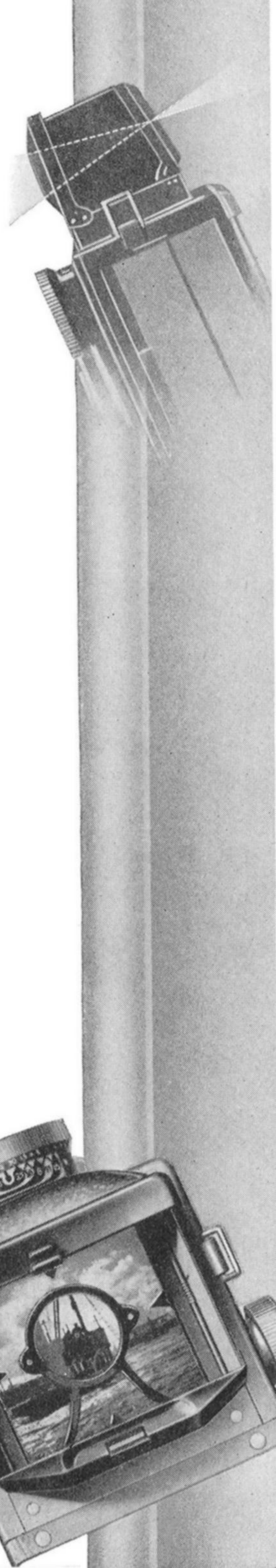
No.	Lens Anastigmat	Focal length	Shutter (showing highest speed)	£	s	d
1.	Voigtar F/4.5	(7.5 cm.) 3"	Compur $\frac{1}{300}$ sec. . . . .	10	10	0
2.	Voigtar F/3.5	(7.5 cm.) 3"	Compur $\frac{1}{300}$ sec. . . . .	11	10	0
3.	Skopar F/3.5	(7.5 cm.) 3"	Compur-Rapid $\frac{1}{500}$ sec. . . . .	14	0	0
4.	Heliar F/3.5	(7.5 cm.) 3"	Compur-Rapid $\frac{1}{500}$ sec. . . . .	16	0	0

EQUIPMENT: Shoulder strap, Brilliant exposure meter, Yellow filter, Instruction booklet, and Testing certificate.

### USEFUL ACCESSORIES

	£	s	d
Special Interchangeable Normal Yellow Filter (4x) with Case . . . . .	7	0	
Special Interchangeable Green Filter for Pan films, with Case . . . . .	7	0	
Portrait Focar Lens, Size 1 for exposures closer than 3 ft. distance, with Holder and Case . . . . .	9	0	
Near Focar Lens, Size 1 for exposures closer than 20 inches distance, with Holder and Case . . . . .	9	0	
Rubber Lens Hood, Size 1, with Case . . . . .	9	0	
Ever-Ready Carrying Case with Strap . . . . .	1	5	0
Solid type Case (London made) with Strap . . . . .	15	0	

**Two Camera Types united**





**Voigtlander SUPERB**

**Picture Size  $2\frac{1}{4}'' \times 2\frac{1}{4}''$**

When it is desired to make pictures above the average in quality, the same end can be attained in another way. Just as some pages back we mentioned the Rangefinder Bessa as one ideal camera for the discriminating amateur, we can now mention a second: *the Superb*.

Which camera you select depends entirely on personal choice. No formula can be given. But one thing is certain: Those who like a mirror reflex camera will get splendid results with the Superb.

### **Pictorial Effect, Angle of View and Sharpness**

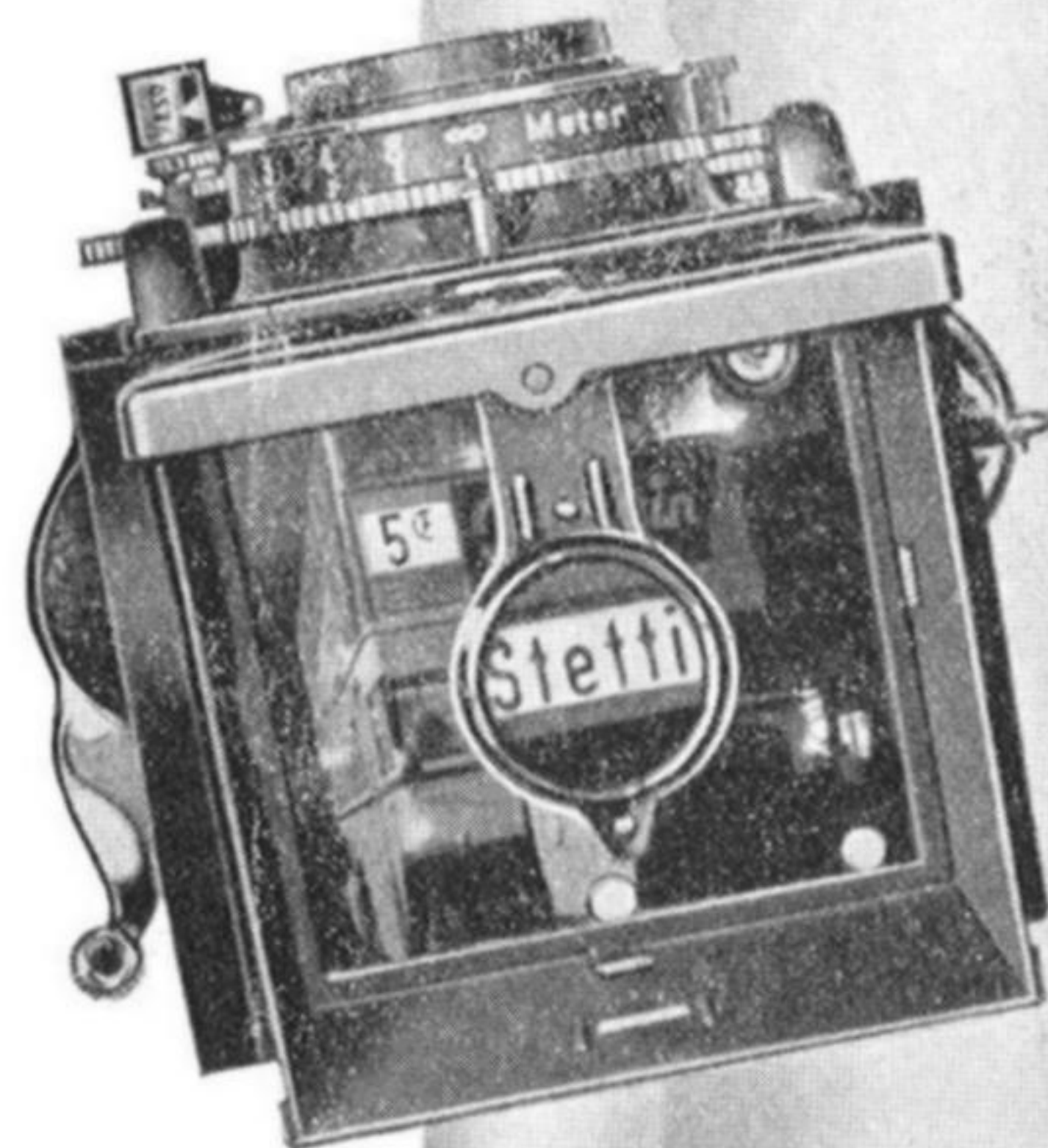
can all be checked by a glance on the ground-glass screen of the Superb. Focussing to utmost sharpness is child's play, because the hinged magnifying lens in the finder hood shows you the slightest difference in sharpness. The taking and finder lenses (both Voigtlander anastigmats) are synchronised with great accuracy, and what appears sharp on the ground-glass screen must come out equally sharp on the film.

## Automatic Parallax Compensation

ensures that you see in the finder the exact angle of view that will appear in the picture. In a simple, but ingenious manner the difference in height parallax between the two lenses is compensated for by the automatic inclination of the top finder lens assembly, during focussing, to such an extent that finder image and picture automatically coincide.

## Many minor refinements

which are found so useful during photographing, supplement the technical equipment of the Superb. The finder hood can be converted into a sports finder at the touch of a finger. The spirit level above the ground-glass screen ensures that the camera is held level, the automatic counting mechanism regulates the distance between shots on the film, the light-traps prevent fogging, the aperture and shutter setting can be read at a glance from above — in short, everything has been thought of in the Superb.



## Voigtländer Superb $2\frac{1}{4}'' \times 2\frac{1}{4}''$

No.	Lens Anast.	Focal length	Shutter	£	s	d
1.	Skopar F/3.5	(7.5 cm.) 3 in.	Compur $\frac{1}{250}$ sec. D.A.*..	19	7	6
2.	Heliar F/3.5	(7.5 cm.) 3 in.	Compur $\frac{1}{250}$ sec. D.A.*..	21	7	6

EQUIPMENT: Instruction book, shoulder strap, cable release, exposure calculator, testing certificate and two lens caps.

\*D.A. delayed action device.

### ADDITIONAL ACCESSORIES:

	£	s	d
Yellow filter (Size I)			
“Moment” exp. factor 2x with leather purse .....		9	0
“Normal” exp. factor 4x, with leather purse .....		9	0
“Portrait-Focar” lens attachments (Size I)			
(For distances under 3 ft.) per pair in leather purse .....		18	0
“Near-Focar” lens attachment (Size I)			
(For distances under 20 in.) per pair in leather purse .....		18	0
Special metal lens hood .....		6	6
Ever-ready case, with shoulder sling .....	1	5	0
Solid leather case (ordinary shape) .....		15	0
Collapsible India-Rubber lens hood .....		9	0

There is also a “Superb for Stereoscopic photography”, namely, the well-known Voigtländer “Stereoflectoscope”. Full particulars of this highly interesting branch of photography will be sent on application.

**Plastic Photographs with the „Stereoflectoscope“**



### “Character” in the Picture

Just look at these wonderful clouds with their soft shading. They bring character, life and atmosphere into the picture. And if you would like to know how this is done — you simply place a Voigtländer yellow filter in front of the lens! Those who know this simply cannot realise that there are still photographers who snap without a filter and are satisfied with a bald white patch as sky. Nobody should be so easily content. Therefore always use a filter, at least in daylight; and be sure to use a Voigtländer filter, since you are then assured of optically perfect grinding and correct tone rendering. If you do not wish to buy the two filters “Moment” and “Normal” at once, you can start with the “Moment” filter only, and later on you can add the “Normal” filter, which is more suitable for specialised subjects.

**Voigtländer** films give the finest results

# Voigtländer FILTERS

Optically flat, ground from solid glass, stained in the mass, and supplied in interchangeable mounts, with case.

Two Types: Moment (light about 2x), or Normal (deeper, about 4x).

Size	Diameter of Lens Mount	Price
1	25 - 29 mm.	9/-
2	30 - 33 mm.	10/-
3	34 - 38 mm.	11/-

Sizes and Prices of interchangeable Focar lenses and filters for use in the above mounts will be found on page 23.

*Special Filters* for use with the Rangefinder Bessa are listed on page 11, Baby Bessa, page 7, and Focussing Brilliant, page 15.





## “Portrait”

It is true that the picture that can be obtained by focussing to a close distance is quite large. On occasions, however, amateurs want *still larger* close-ups than are normally obtainable with the camera. This is possible, by using a “magnifier” designed for the purpose. Known as the “Focar lens”, this enables a sharp focus to be obtained even at very close distances. For ordinary close-ups the “Focar Portrait Lens” is most suitable, but if it is desired to reproduce smaller objects, for example, flowers, butterflies, coins, etc., on a really large scale, the Close-Up Focar lens should be used.

large close-up pictures

## Voigtländer Portrait Focar Lenses

Use: Portraits at closer distances than the focussing scale of the roll film camera permits.

(Supplied complete with Interchangeable mount and Leather Purse.)

Size	Diameter of Lens Mount	Price
1	25 - 29 mm.	9/-
2	30 - 33 mm.	10/-
3	34 - 38 mm.	11/-

## Voigtländer Near Focar Lenses

Use: Pictures at still closer range than possible with Portrait Lens.  
(Too close for portraits !)

(Supplied complete with Interchangeable mount and Leather Purse.)

Size	Diameter of Lens Mount	Price
1	25 - 29 mm.	9/-
2	30 - 33 mm.	10/-
3	34 - 38 mm.	11/-

Sizes and Prices of Interchangeable filters and Focar lenses for use in the above mounts will be found on page 23.

For enlarging

## Voigtländer WZ Soft Focus Lens

Surprisingly beautiful artistic effects can be obtained with this Voigtländer soft focus lens when enlarging. We do not mean that this is suitable for all subjects — since what is excellent for one subject is not suitable at all for another.

For this reason it is always best to take pictures critically sharp and to effect the softening only when enlarging.

The Voigtländer WZ soft focus lens is ideal for this purpose. You can give your pictures any desired degree of softness, and can range from sharp definition to quite delicate soft diffusion. The WZ lens has a focus of 18 cm., it is suitable for negatives up to 9 × 12 cm., and costs £5.



## Exposures against the light

Life is like this. Not so very long ago everyone was against taking pictures against the light. In every manual, in all the better instruction booklets it was stated that pictures against the light should be strictly avoided. Otherwise . . .

Now, all of a sudden, against the light shots are popular. And rightly so. Splendid effects can be obtained if an anti-halation film (e.g. Bessapan) — and a good Lens Hood — are used.

## This splendid Lens Hood

can be obtained at your photographic dealer's.

It is the Voigtländer rubber Lens Hood — practical, convenient and universally useful, like everything made by Voigtländer.



It performs in splendid manner its actual task—keeping harmful rays of light (including artificial light) away from the lens. As this point has not yet become generally known — let it be pointed out here that it is also a good shield against drops of rain or spray (which might fall on the lens). In addition, it has the praiseworthy ability to fold up into very small space, and can be accommodated in a handsome, flat box. The mount also holds yellow filters and Focar lenses. Thus, it is a valuable accessory.

## Voigtländer Rubber Lens Hood

(with mount for filters and portrait lenses), in flat container.

Three sizes, each costing 9/—.

Diameter of lens mounts:

Size I	Size II	Size III
25—29 mm.	30—33 mm.	34—38 mm.

## Interchangeable Voigtländer Filters for the Lens Hood\*

in metal ring, Moment Filter, Normal Filter, or Green Filter.

Size	Price
I	5/—
II	6/—
III	7/—

## Interchangeable Voigtländer Focar lenses for the Lens Hood\*

in metal ring, Portrait Focar Lens or Near Focar Lens.

Size	Price
I	5/—
II	6/—
III	7/—

\*When ordering these lenses and filters, the Size I, II, or III of the Lens Hood must be given. (Also suitable for Filter or Focar lens mounts.)



**Voigtländer Lens Hood**



## ILLUSTRÄ FILM

VOIGTLÄNDER Illusträ Film 18/10° DIN. A fine film for blues, yellows and greens. (Light intensity: eighteen tenths DIN.)

Illusträ is a double-coated film, with two superimposed emulsions. In consequence, the exposure latitude is particularly great, and over-exposures are balanced to a high degree. Under-exposures are hardly possible in view of the high speed (18/10° DIN.) Being a fully orthochromatic film, Illusträ gives excellent reproduction not only of blue, but also yellow and green, so that when the Voigtlander pale "Moment" Filter is used, good balance of tone values is obtained, perfection being reached with the aid of the Voigtlander "Normal" Filter. A red coloured backing prevents halation, while a special coating eliminates "telegraph wires". On the whole, Illusträ is certainly a film from which much can be expected.



## BESSAPAN FILM

VOIGTLÄNDER Bessapan Film 19/10° DIN. The film for reds, greens, yellows, and blues. (Light intensity: nineteen tenths DIN.)

Like Illusträ, Bessapan film is also double-coated, but it is sensitive to red as well as blue, yellow, and green, that is, an orthopanchromatic film. All colours are reproduced in artificial light almost entirely correctly, without using a filter, while in daylight it is merely necessary to soften the predominating blue with the aid of a filter in order to obtain the same results. This great sensitivity to colours and the high general speed (19/10° DIN) give such short exposures both in daylight and artificial light, that in this respect Bessapan will do whatever is required of it. A very important property in this respect, which is particularly difficult to attain in panchromatic films, is that Bessapan film does not become hard even in a normal developer, but renders a harmonious negative which prints well even in the shadows.



OPTICIAN & PHOTOGRAPHIC SPECIALIST  
**A.R. BAINES**  
(PROPRIETOR J.A. PRESTON)  
39 JAMES ST., HARROGATE